

MANUAL  
FOR FILE PREPARATION



EE EXCLUSIVES

WEAVING YOUR DREAMS  
SINCE 1900



# Table of contents

<b>Getting started</b>	<b>3</b>
Technical specifications	3
Preparing your files.	3
How to create a repeating pattern	4
<b>Photo weave</b>	<b>6</b>
Production process: colour reduction	7
<b>Graphic weave</b>	<b>9</b>
Things to look out for.	10
Assigning bindings	11
Labeling bindings + colours	12
<b>Combined weave</b>	<b>14</b>
Examples of combined weaves	15
Production process: creating layers	16
<b>Finishing your woven fabric</b>	<b>17</b>
Good to know	17
Wallhangings	17
Pillow sleeve	18
Plaid	18
Table cloth or towels	18



# Getting started

This manual covers the various specifications that are good to know when preparing your design – including information about pattern repeats, edge finishing and the most common types of Jacquard fabrics our company offers.

## Technical specifications

A woven fabric is made of warp (vertical) and weft (horizontal) yarns. Each warp thread can be individually lifted - in order to cover a weft thread, or lowered - to let the weft thread run over it. EE Exclusives has several computer-controlled Jacquard looms. The maximum width of the loom is 150 cm, so this means we can control 76 warp threads per cm. The machines are equipped with a black or a white polyester warp and can hold up to 8 weft yarns.

## Preparing your files

Your design starts as an image, which you can make any way you see fit – generate a pattern with Adobe Illustrator or Photoshop, draw one on paper and scan it, or take a picture of something that you'd like transformed into a woven fabric. The three most common approaches to design a Jacquard weave are photo weave, graphic weave and a combined weave. All of the design directions require another procedure, which we explain in the following pages.

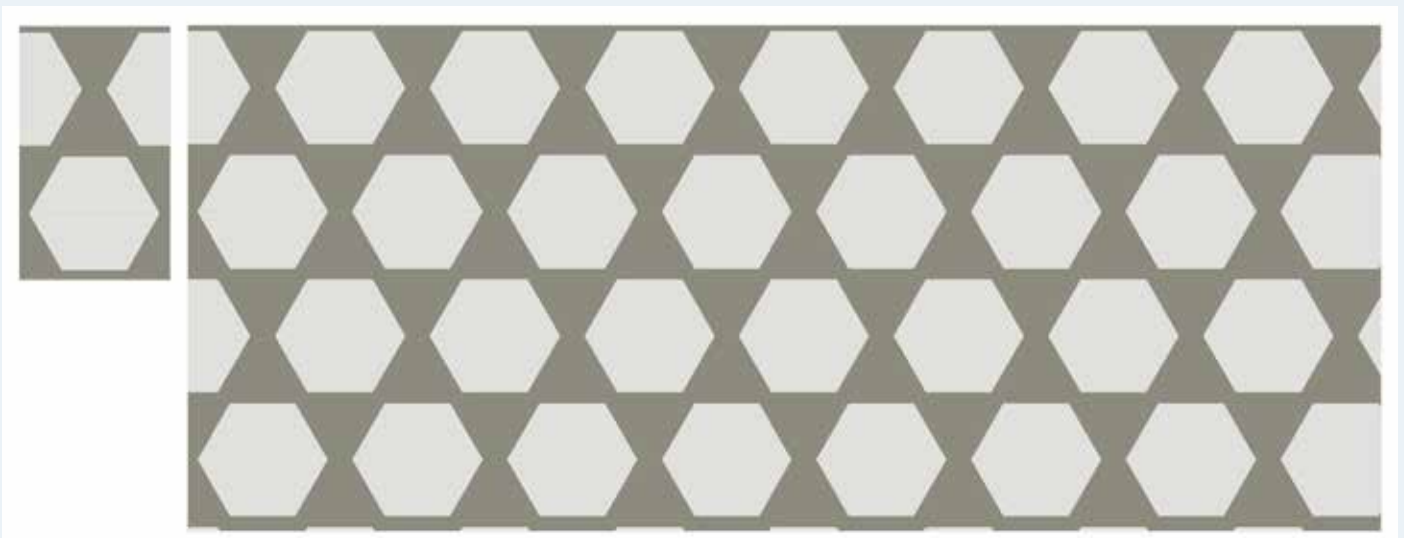
## **However, there is some information that is important for all design directions:**

- The design must be in 1:1 scale, actual size.
- The quality of the file should be 150 dpi and above.
- The file must be saved as a Photoshop, Illustrator or TIFF file; preferably sent via WeTransfer.
- There is a 5 cm repeat of fabric before the fringes start. This is a repeat of the last 5 cm of the fabric, so if your design is 150 cm wide, the extra edge will be visible.
- Our company offers a wide palette of (recycled/bio) yarns ranging from wool, cotton, polyester and fantasy yarns. Special yarns can be used upon request. When you send us Pantone references of your desired colours, we can select the best yarn options for your project. You can find Pantone/RGB colour references for some of our yarns in a separate document. Regardless of the yarn you choose, all our fabric will have fall under our STeP-certificate (Sustainable Textile Production), as our whole factory is certified, not just the material we work with.
- Whenever your design contains text and/or grids, please save them as a separate file which we can later use as a mask. Be precise! It's the best way to ensure that letters and lines come out legible and clear.

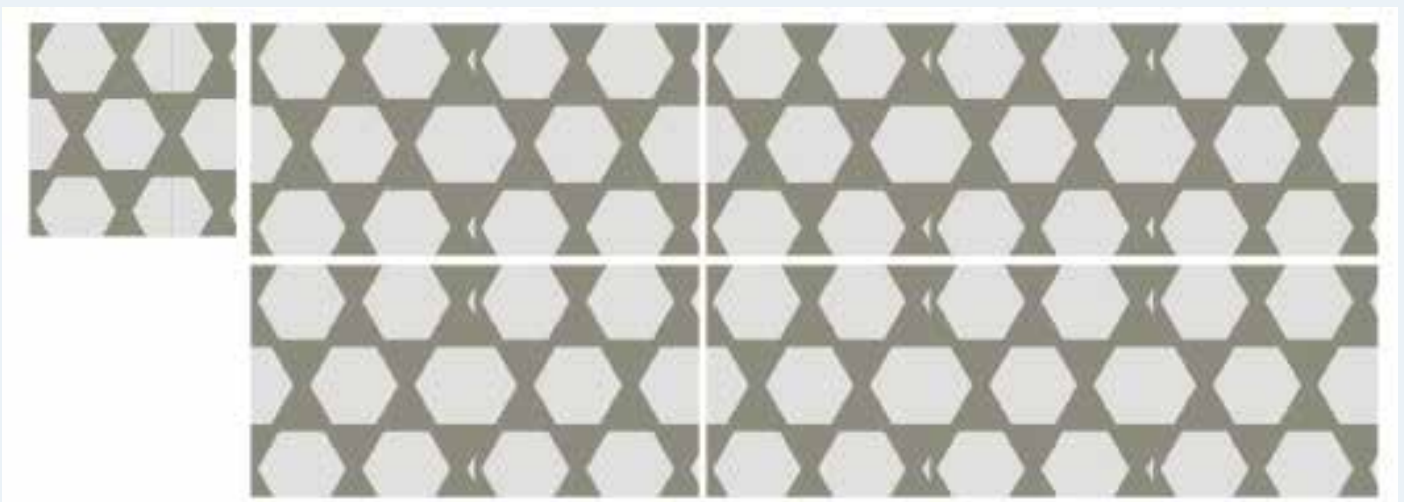
## How to create a repeating pattern

If you want to create a repeating pattern, make sure the left and right edges of your artwork match up exactly and the top and bottom edges match up exactly as well. While checking if your design is seamless, make sure you zoom in closely because every pixel represents a yarn during the weaving, so when the lines don't align, it will show in the final woven fabric. Keep in mind that it is your own responsibility to make your pattern repeat correctly.

To prepare the weaving file for your repeating design in the best way, we would like to receive a single repeat 1:1 scale and the pattern repeated over the full width of 150 cm, also in 1:1 scale. Both graphic as photo weaves can be repeating designs.



Repeating pattern



Non-repeating pattern



EXAMPLE OF PHOTO WEAVE



# PHOTO WEAVE

The goal of photo weaves is to translate pixelated artwork - no matter if this is a sketch, painting or photograph, into a piece of fabric as close to the original artwork as possible. We „paint” your image on the loom, pixel by pixel.

## Production process: colour reduction

When we receive your artwork, it still contains thousands of coloured pixels. The loom allows a maximum of 8 weft yarns to weave with, therefore the colours in your artwork need to be reduced. Don't worry, we make sure that the pixels of remaining colours blend smoothly and your design still looks great. Our Jacquard designer uses specialized weaving software to analyse your artwork and reduces the pixels of your artwork to a maximum of 8 colours.



Original artwork



After colour reduction





EXAMPLE OF GRAPHIC WEAVE



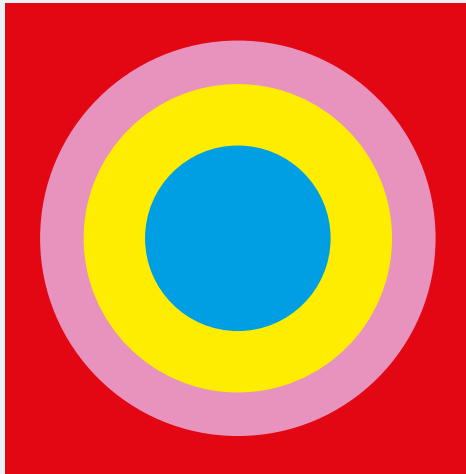
# GRAPHIC WEAVE

In a graphic weave, the starting point of your design is a vector drawing. The process starts with an image; each distinct colour in your artwork defines an area of fabric where we can assign a different weave structure. The different colours in your designs are what we call “technical colours”. To help you design your artwork with technical colours, and a legend, we created a template for you to use. The more technical colours you use, the more complex the design process becomes. Keep in mind that the price of your fabric is based on the complexity of the design.

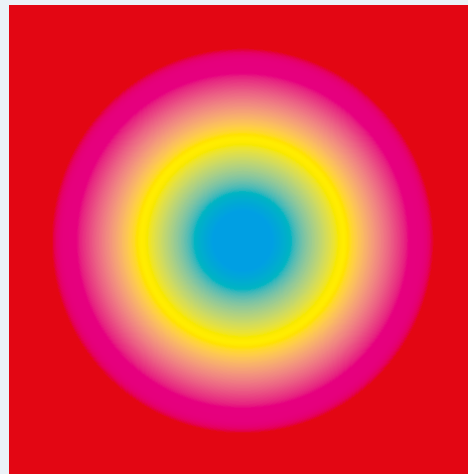
For the best control over the design, if your TIFF image is exported from a vector drawing program like Adobe Illustrator, turn off anti-aliasing to avoid introducing extra colours at the boundaries between colour areas. Also, use high resolution (150 dpi or more) to prevent blended lines and blurry edges.

## Things to look out for

Your design should contain a small number of different colours. Each distinct colour in your design defines an area of fabric where you can set a different weave in the next step. If your design has more than 8 colours, we will merge similar colours to reduce it to 8, but you have more control if you prepare the image with 8 or fewer colours to start with.



4 colours - graphic weave quality



Many colours - photo weave quality

Turn off anti-aliasing to avoid introducing extra colours at the boundaries between colour areas. For the best control over the design, if your TIFF image is exported from a vector drawing program like Adobe Illustrator, turn off anti-aliasing to avoid introducing extra colours at the boundaries between colour areas.



Anti-aliasing off



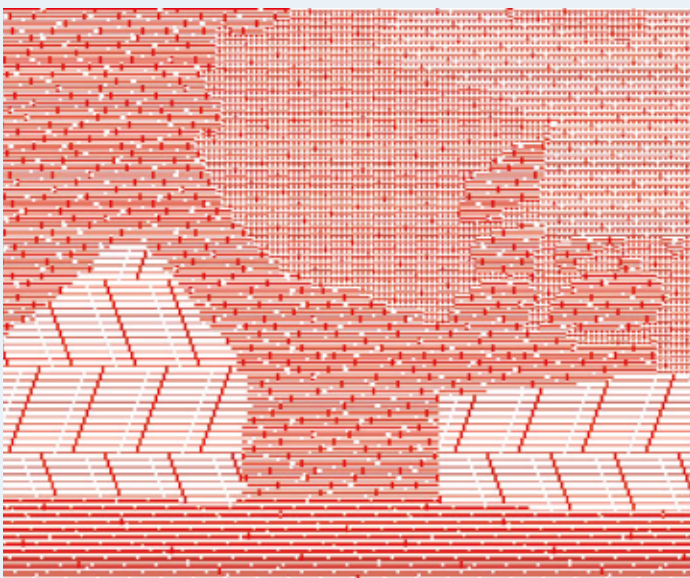
Anti-aliasing on

## Assigning bindings

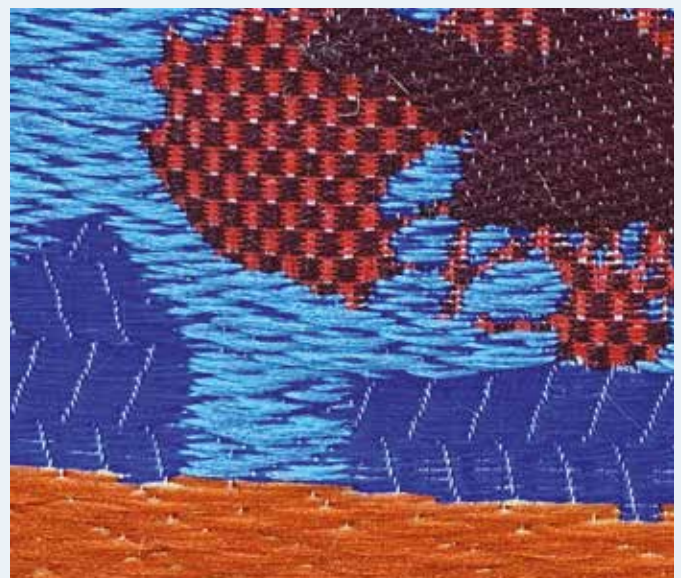
You can select a maximum of 8 weft yarns. When it comes to warp it can be either black or white. After choosing the yarns for your fabric, you can start selecting your weave structures. To help you get inspired, we've prepared a brochure with an overview of some basic weave bindings. The choice of weave binding affects the exact colour and also the texture of the fabric surface. It is possible to combine different yarns together in one weave structure to increase the diversity of colours and structures.



Original artwork with technical colours



Assigning bindings in the weaving software



The woven artwork

## Labeling bindings + colours

Your design starts as an image, each distinct colour in your design defines an area of fabric where we can assign a different weave structure. We have allocated 20 colours in the swatches of this template for you. These are the technical colours, so they do not match the yarn colours.










This example shows how to indicate the weave structures and yarn colours. In the attached legend form you can indicate your desired weave structures. You can use as many technical colours as your design requires.



Yarn colour 1   Yarn colour 2   Yarn colour 3   Yarn colour 4



Yarn colour 5   Yarn colour 6   Yarn colour 7   Yarn colour 8

	Technical colour 1 <b>Yarn 1</b>		Technical colour 5 <b>Yarn 5</b>
	Technical colour 2 <b>Yarn 3</b>		Technical colour 6 <b>Yarn 8</b>
	Technical colour 3 <b>Yarn 6 + 8</b>		Technical colour 7 <b>Yarn 7 floats</b>
	Technical colour 4 <b>Yarn 1 + 4</b>		Technical colour 8 <b>Yarn 2 floats</b>



EXAMPLE OF COMBINED WEAVE

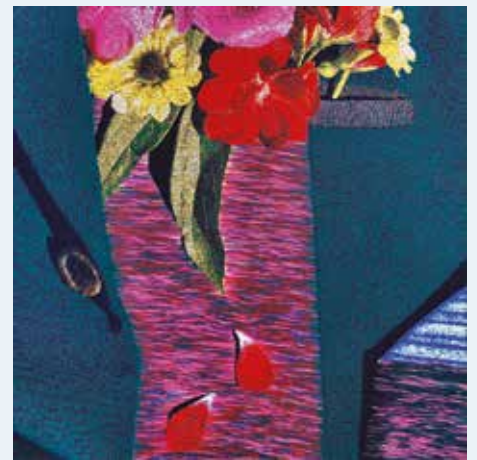
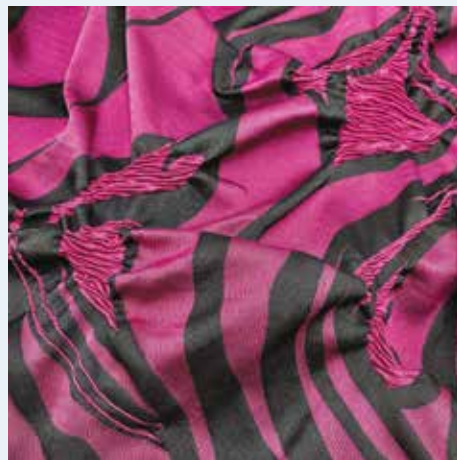
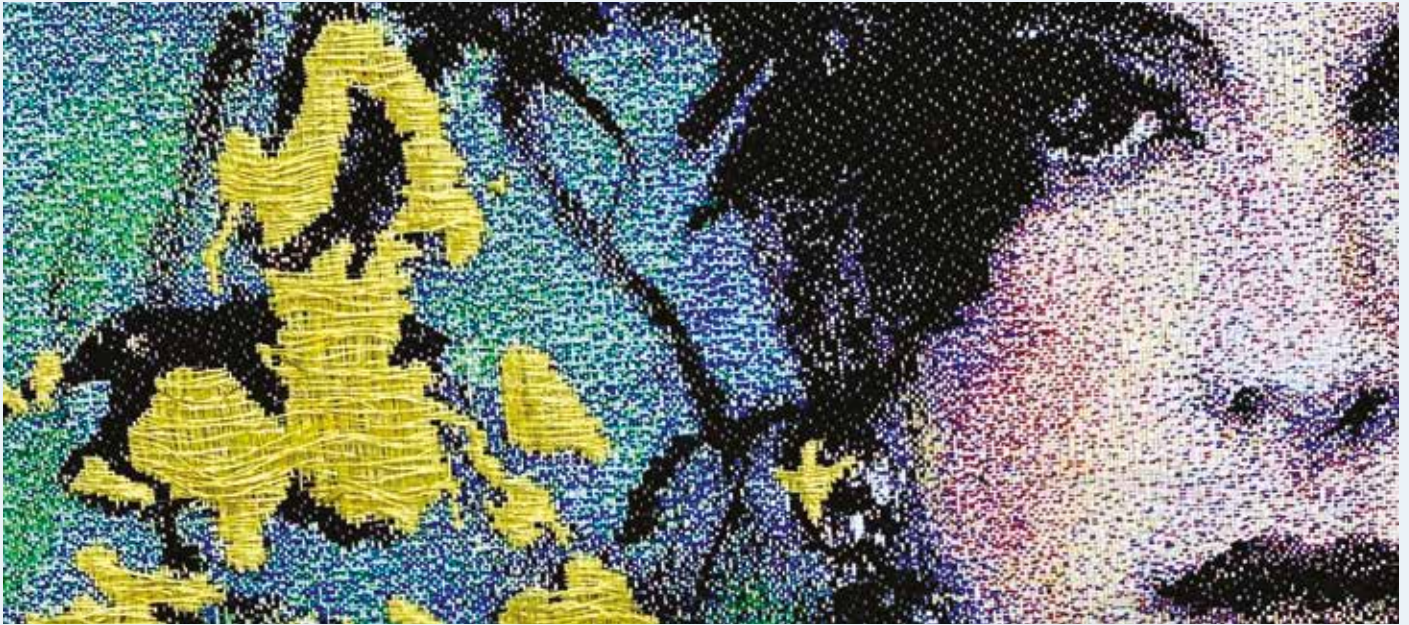


# COMBINED WEAVE

In this type of weave, we combine the previously mentioned Jacquard design directions, the photo weave and the graphic weave. Two types of files need to be prepared to make this type of weave. The first file to prepare is the photographic artwork, this can be executed as instructed in the photo weave section. In addition to the photographic artwork, a graphic mask should be prepared to indicate the desired special weave bindings. This mask can be made in several colours, to indicate different weave structures.

## Examples of combined weaves

With this technique, we can precisely allocate both special yarns like glossy or shrinking yarns and special bindings like long floats in certain areas of your design.





## Production process: creating layers

A masking layer is created to be placed on top of the specific area where special bindings are assigned. The area outside the technical colours goes through the photo weave process.



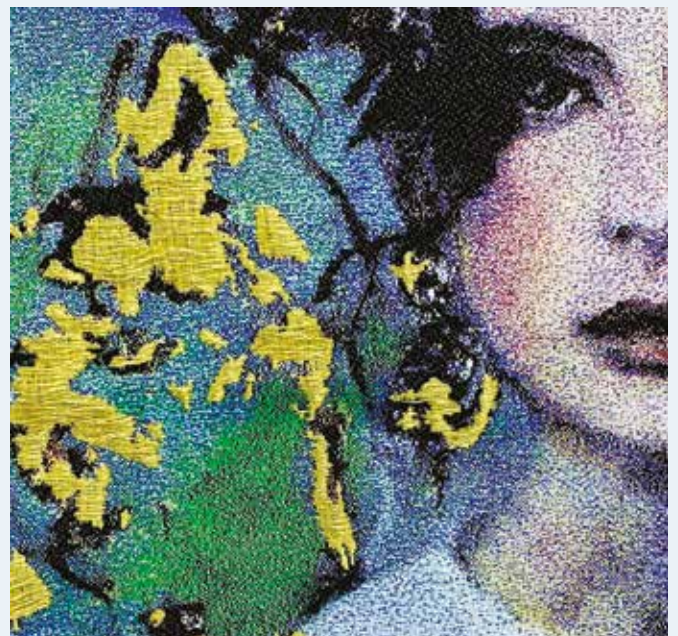
Original artwork



Masking layer



Technical file



Woven artwork

# Finishing your woven fabric

We offer some confection options for your woven wall hangings, pillow sleeves, plaids and other products.

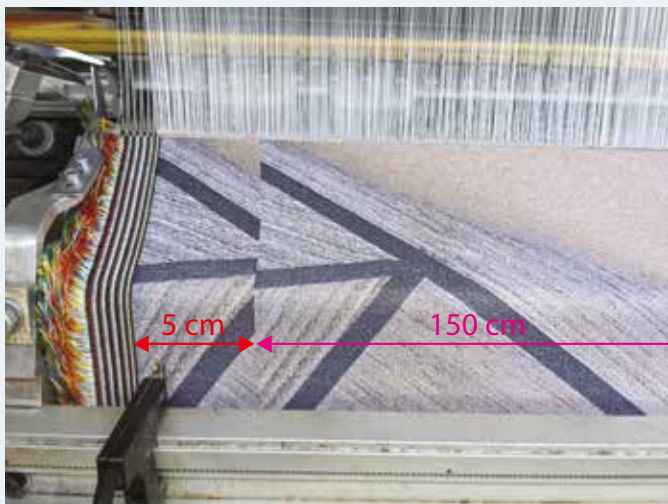
## Good to know

- We deliver your fabrics loom-state. This means the fabric comes directly from the machine without any additional finishing treatments.
- If you want to turn your fabric into e.g. a cushion or wallhanging, make sure you include a seam allowance of 5 cm for finishing.
- Fabrics woven entirely with polyester yarns can be heat cut directly on the machine. We can attach heated knives on the loom that can cut your fabric in the vertical (warp) direction.
- We offer a fire retardant treatment (FR). This treatment comes with a certificate.

## Wallhangings

Wallhangings need to be finished in two directions vertical (warp) and horizontal (weft).

- To hang your work we can confection your wall hanging with a tunnel on the top and/or bottom of the fabric.
- It is possible to keep the fringes of weft threads on both sides of the fabric. If your design is 150 cm wide, keep in mind that the 5 cm repetition on both sides of the fabric will be visible before the fringes start.
- If your design is smaller than 150 cm but you want to add fringes to your design, we can add a weave binding that will weave the fringes.



This is how a design with a repeated 5 cm and fringes looks on the loom



Example of a full-width wallhanging with preserved fringes

Make sure you add an extra 5cm to your design in a single colour so we can add the binding.

- We can hem your fabric in both horizontal and vertical directions. Make sure you add a seam allowance of 5 cm for this confection.
- We can finish your woven Jacquard fabric on a wooden bar. With this confection, we need an allowance of 15 cm which is usually mirrored. This allows our framer to cover the sides of the frame as well.

## **Pillow sleeve**

- We can confection a pillow sleeve fully finished with a zipper and piping and a cushion filling. We offer several sizes of cushion fillings.

## **Plaid**

- We can finish your plaid with a mitred seam or a roll seam.
- It is possible to keep the fringes of weft threads on both sides of the fabric. There is a 5 cm repeat of fabric before the fringes start. This 5 cm is a repeat of the last 5 cm of the fabric, so if your design contains the full 150 cm of the loom, it will be visible.

## **Table cloth or towels**

- We can finish your table cloth or towels with a mitred seam or a roll seam.



Tunnel for a wallhanging



Fringes from the machine



Pillow finished with zipper



Heatcut edges



Fringes from a weave binding



Pillow finished with piping



Mitred seam



Rolled seam



EE EXCLUSIVES

JOOST JANSEN - CREATIVE DIRECTOR  
[EXCLUSIVES@EELABELS.COM](mailto:EXCLUSIVES@EELABELS.COM)

ROBIN MATULESSY - CREATIVE PROJECT MANAGER  
[ROBIN@EELABELS.NL](mailto:ROBIN@EELABELS.NL)

[WWW.EE-EXCLUSIVES.COM](http://WWW.EE-EXCLUSIVES.COM)